

# AstraZeneca New Cambridge Site

17 July 2014





# Building an environment where science thrives

Dr Menelas Pangalos  
EVP Innovative Medicines & Early Development

17 July 2014

AstraZeneca



MedImmune



# Introducing AstraZeneca



**AstraZeneca today: science at the heart of everything we do**



**Stimulate a more collaborative, more permeable research ecosystem**



**Building a future in Cambridge**

# A Global Business

**Pipeline includes 104 Projects\***

**50,000**  
employees

**\$25.7bn sales 2013**

**11 new molecular entities** in Phase 3 or  
under regulatory review\*

Research across  
**3 continents**

**At least \$4bn**  
invested in R&D annually

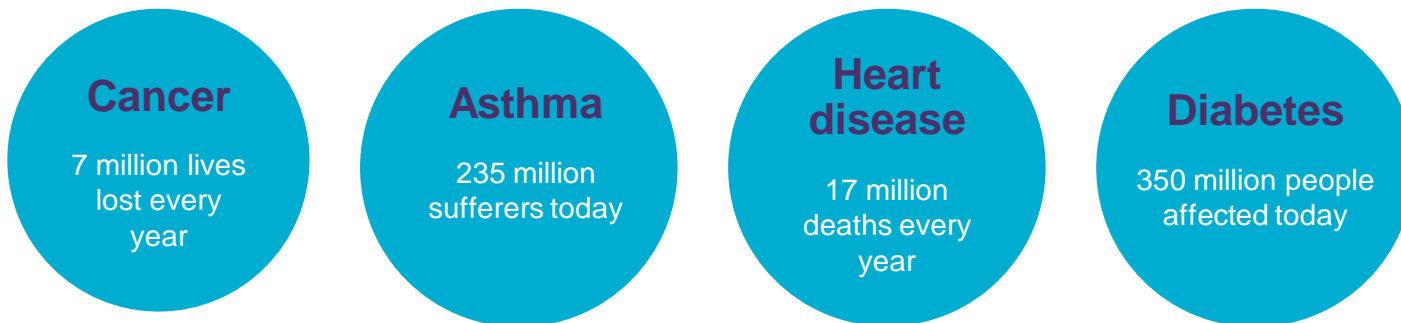
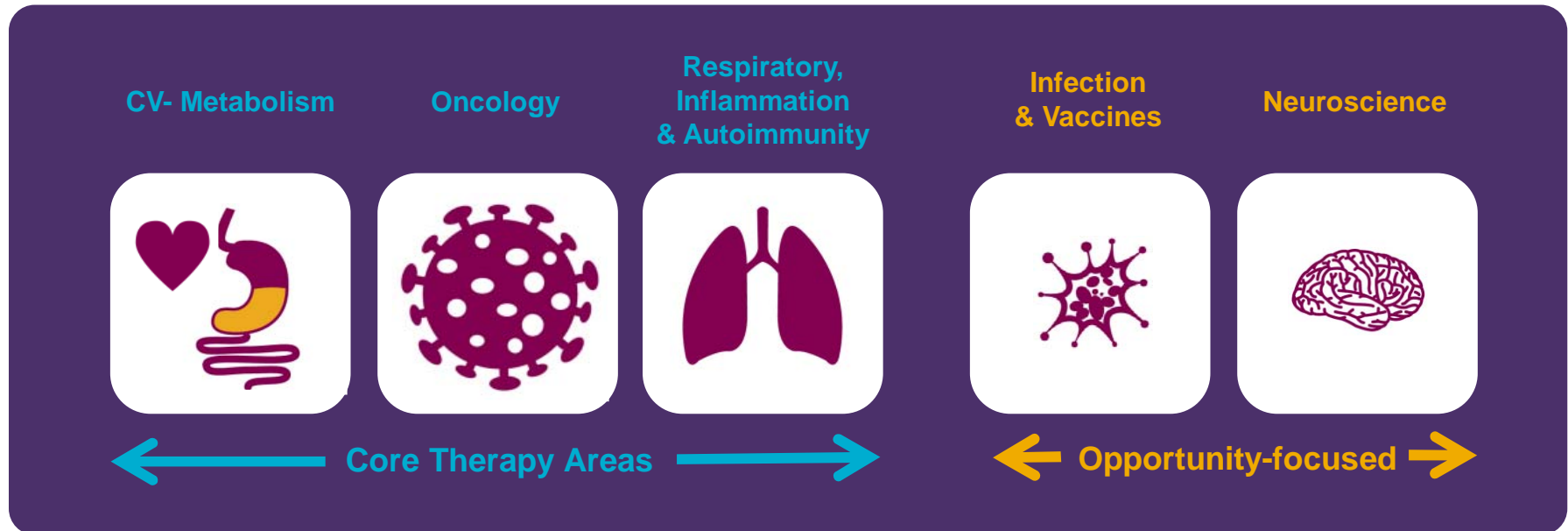
Sales in over  
**100 countries**

Emerging Markets  
**\$5.4bn sales 2013**

\*Pipeline - Q1 2014



# We are focused on 3 core therapy areas



# Committed to collaboration in the UK and Cambridge

200+ active collaborations with  
UK academic institutions



~ 70% of our  
pipeline has  
been  
discovered,  
developed or IP  
registered in the  
in the UK

Collaborations with the Cambridge  
science community include:





# The Cambridge Biomedical Campus presents further opportunities for collaboration

Cambridge University Hospitals   
NHS Foundation Trust

Addenbrooke's Hospital  
The Rosie Hospital

Papworth Hospital   
NHS Foundation Trust

Future hospital site

 Medical  
Research  
Council

Laboratory of  
Molecular Biology



School of Clinical Medicine

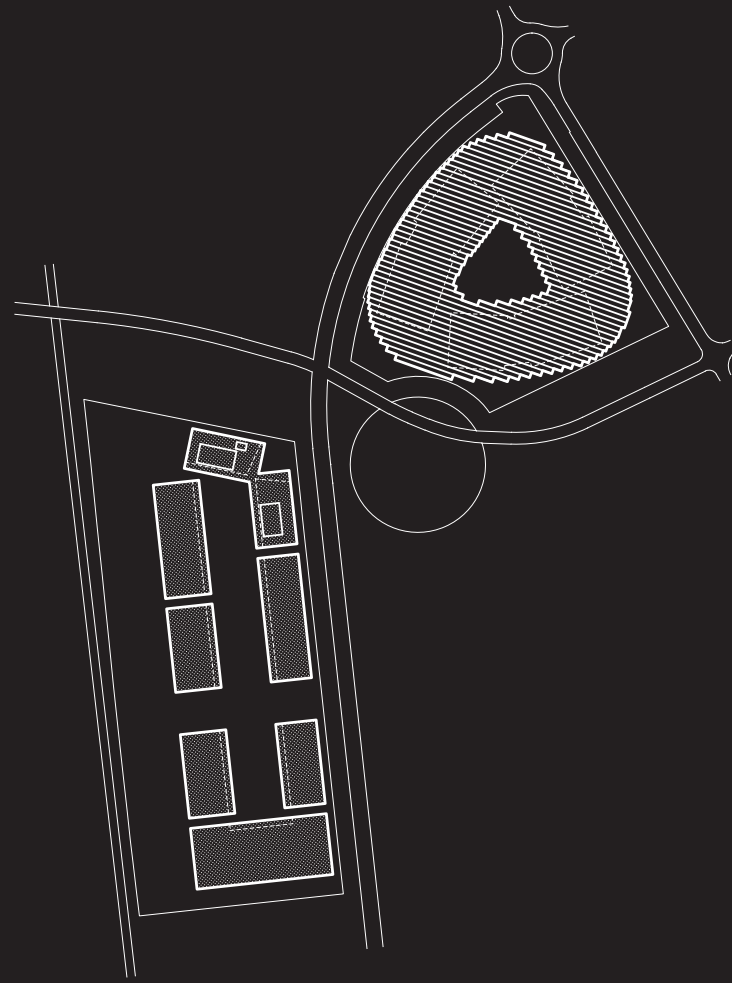
AstraZeneca   MedImmune

New UK R&D Centre and  
Global Corporate Headquarters



Cambridge Institute





# AstraZeneca

New Cambridge Site

HERZOG & DE MEURON

BDP.

CAMBRIDGE MEMBERS CONSULTATION



# AZ CAMPUS MASTERPLAN







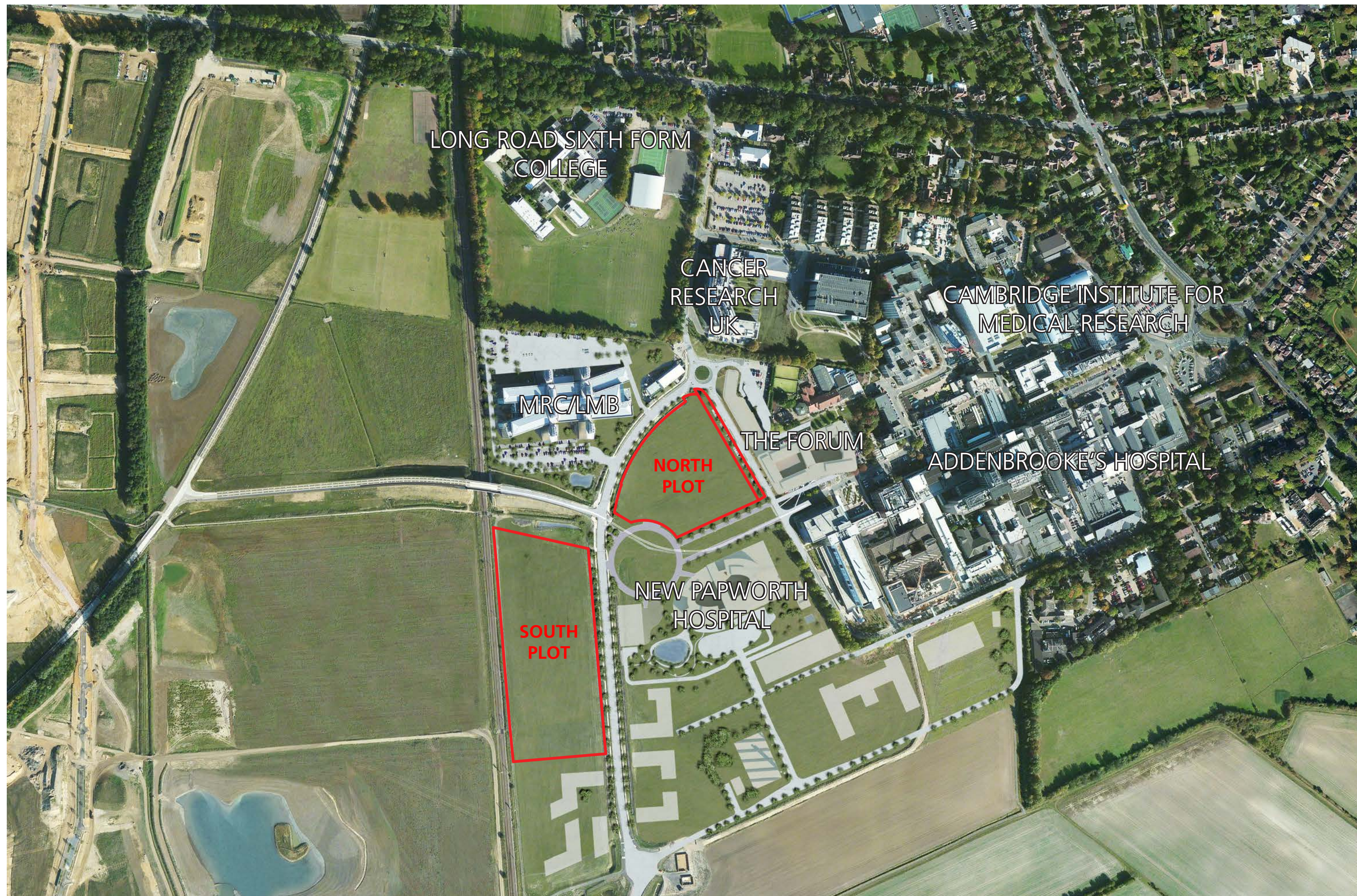






CAMBRIDGE BIOMEDICAL CAMPUS  
ASTRAZENECA, NEW CAMBRIDGE SITE









AZ CAMPUS - MASTERPLAN  
ASTRAZENECA, NEW CAMBRIDGE SITE





AZ CAMPUS - PHASE 1  
ASTRAZENECA, NEW CAMBRIDGE SITE





VIEW FROM CIRCUS  
ASTRAZENECA, NEW CAMBRIDGE SITE





VIEW FROM PIAZZA  
ASTRAZENECA, NEW CAMBRIDGE SITE









SCALE COMPARISON (ST. JOHN'S COLLEGE, CAMBRIDGE)  
ASTRAZENECA, NEW CAMBRIDGE SITE





INNER RING (FIRST FLOOR )  
ASTRAZENECA, NEW CAMBRIDGE SITE





LABORATORY (SECOND FLOOR)  
ASTRAZENECA, NEW CAMBRIDGE SITE



# **IMPROVED ENERGY USE**

IN ENERGY USE, OUR SCHEME IS DESIGNED TO IMPROVE ON INTERNATIONAL BENCHMARKS FOR R&D FACILITIES

# **INNOVATIVE ENERGY CENTRE**

THE ENERGY CENTRE FACILITATES LOW ENERGY SOLUTIONS AND INCLUDES ON SITE RENEWABLE SOURCES BY WAY OF WHAT WE BELIEVE WILL BE THE LARGEST GROUND SOURCE COOLING ARRAY IN THE UK

# **BREEAM EXCELLENT**

WE ARE TARGETING BREEAM EXCELLENT.  
A PRE-ASSESSMENT OF OUR CONCEPT DESIGN DEMONSTRATES THAT THIS WILL BE ACHIEVED

# **FURTHER ENERGY REDUCTION MEASURES**

ASTRAZENECA HAVE COMMITTED TO FURTHER ENERGY REDUCTION MEASURES OVER AND ABOVE THESE TARGETS WHERE THEY DEMONSTRATE A LIFE CYCLE COST BENEFIT. THESE MEASURES INCLUDE INCREASING ON SITE RENEWABLE TO UP TO 17%



# Public Consultation

## An invitation to share your views

Dear Neighbour

AstraZeneca, a global biopharmaceutical company, invites you to attend its public planning consultation at Long Road Sixth Form College between the afternoon of Friday 18<sup>th</sup> July and Saturday 19<sup>th</sup> July (see below). This consultation relates to the plans to build the Company's new Global R&D Centre and Corporate Headquarters on the Cambridge Biomedical Campus.

We will be submitting the detailed planning application in Autumn 2014 and this consultation and exhibition will give you a chance to look at those plans, meet the design team and share your views.

## The Planning Consultation

**Where?** Learning Resource Centre Study Room  
Long Road Sixth Form College, Long Road, Cambridge, CB2 8PX

**When?** Friday 18<sup>th</sup> July 15:30 – 20:30 or Saturday 19<sup>th</sup> July 10:00 – 14:30



### Rail Access

The nearest train station is Cambridge and is 1.2 miles away from the College.

### Road Access

The nearest motorway junction is the M11 Junction 11 (A10), 2.5 miles away from the College. There is parking available at the College.

### Guided Busway

There is a stop a short distance from the entrance to the college on Robinson Way on the Addenbrooke's site.

All Comments on the plans must be received by 17:00 on Thursday 31<sup>st</sup> July 2014.

And if you can't attend the event you can still look at the plans on our website <http://cambridge.astrazeneca.com>

We look forward to seeing you there.

AstraZeneca   MedImmune

## Where?

## Long Road Sixth Form College

## When?

**Friday 18<sup>th</sup> July 15:30 – 20:30**

**Saturday 19<sup>th</sup> July 10:00 – 14:30**



This document and the ideas incorporated herein, as an instrument of professional service, is the property of Herzog & de Meuron and is not to be used or reproduced in any manner whatsoever, in whole or in part for any other project without the prior written permission from Herzog & de Meuron.

© H E R Z O G & D E M E U R O N





# AstraZeneca New Cambridge Site

17 July 2014

AstraZeneca



MedImmune

